

OUTDOOR COLLECTION



SHADEELEMENTS

OUR CLIMATE

New Zealand's weather can be unpredictable and varies dramatically from season to season - Commonly described as "four seasons in one day"

Increasingly fabric shading solutions are becoming common place in the New Zealand home and business, with fabric being engineered to last longer and offering greater protection from natures' elements. There are sophisticated colour options available to suit any décor adding impressive design flair to any alfresco area. Whether you prefer bright canvas or discreet sunscreen mesh, we have the perfect solution for you.

Our unique weather conditions have led to Shade Elements searching globally for the highest quality shade products, designed specifically with the harsh environment in mind to offer complete year round protection.

Utilising top quality aluminium and stainless steel componentry and long lasting designs. All products are tested thoroughly to ensure they meet our rigorous standards. Shade Elements are industry leaders in providing innovative products that actually work.

OUR BRANDS

We have brought together a range of versatile products from around the world to suit the New Zealand environment. These products provide protection from the harshest of conditions and the longevity required to be recognised as the best on the market.



FRANCIAFLEX AWNINGS - FRANCE

FranciAFLEX utilises 50 years' experience with a blend of engineering, quality and innovation to produce the world's leading awning systems. With up to date technology and strict specifications and a manufacturing department that controls the process from start to finish. You can be sure FranciAFLEX awnings are built to last!



ZIPTRAK® PTY - AUSTRALIA

Ziptrak® has been available on the market for many years now and has adapted to the environment and needs of year round outdoor living. Using experience and constant research and development Ziptrak® allows it's users to have complete comfort and protection from wind, rain and sun. No ropes, No zips, No straps, No buckles.



CITEL TECHNICAL FABRICS - SPAIN

Citel S.L., a Spanish family owned company with a long textile tradition that started back in 1875. Currently in its 6th generation, the family continues investing in quality and innovation to achieve the highest international standards. Citel is vertically integrated and control the whole production process. Citel is not off-shored like many others in the textile industry. The entire range of sun protection fabrics is produced in Barcelona (Spain).



TWITCHELL CORPORATION - USA

Since its beginning in 1922, the Twitchell name has represented quality in yarns and fabrics across a multitude of industries. Shadeview fabrics block up to 99% of the sun's harmful rays. The mesh fabric offers low maintenance sun protection while cutting energy costs by up to twenty percent. Shadeview is available in a range of widths and attractive colours. Today, they have grown into a multi-national manufacturer of some of the world's most innovative fibers, textiles, and coatings.



ACHILLES CORPORATION - JAPAN

For 60 years Achilles have been producing the world's best quality clear PVC. It has grown to become an internationally recognized leading manufacturer. Achilles are committed to excellence and innovation in their field.



HORIZON MONOBLOC

An elegant monobloc awning, engineered using European technology and styling with high quality Aluminium and Stainless steel components. Suited for commercial and domestic applications and easily face or soffit mounted. Horizon is simple, robust and looks great!

EASY, FUNCTIONAL LIVING

The Horizon Awning provides complete protection from the elements, extending your indoor living into the outdoors, year round. Easily operated by gearbox with handle or automated with the press of a button. When automated, a wind or motion sensor can be added to retract the awning in windy conditions. An aluminium hood can also be added for a streamlined look and gives long lasting fabric protection.

LONG LASTING DESIGN

Horizon awnings come with an attractive 5 year warranty and have been tested in winds up to 90km/h with no visible damage.

PRACTICALITY

Folding arm awnings are perfect for overhead sun protection, minimising harmful UV rays and maximising heat reduction.

FEATURES

WIDTH X EXTENSION

Minimum (mm): 1890 x 1500
Maximum (mm): 17720 x 4000

FABRIC

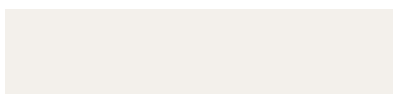
Acrylic Canvas - Docril
Shadeview Mesh

AUTOMATION OPTIONS

Sun & Wind Sensor
Motion Sensor

COLOURS

Warm White Pearl



OPERATION

Manual Crank Operation
Automated

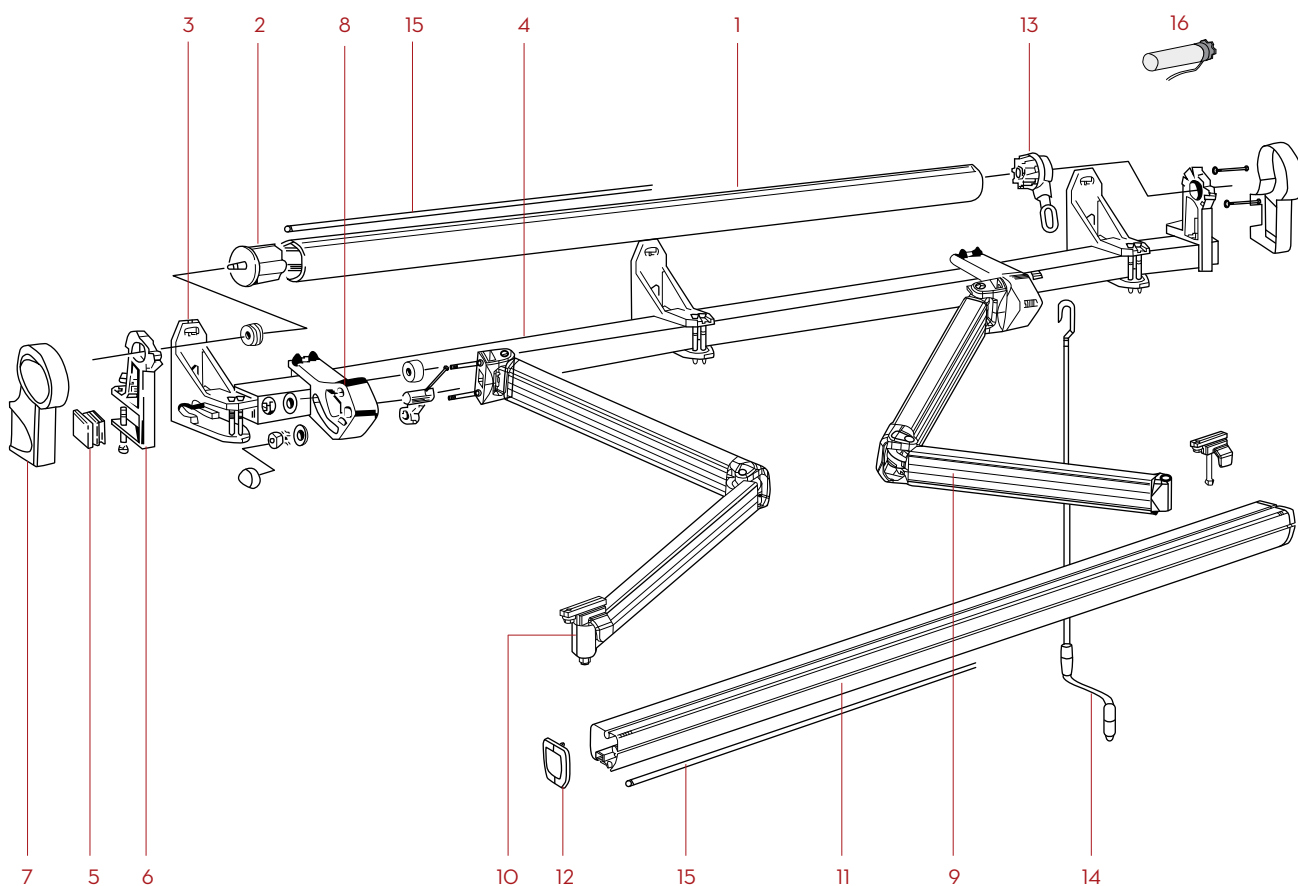
PROTECTION

Optional Hood

Silver Pearl

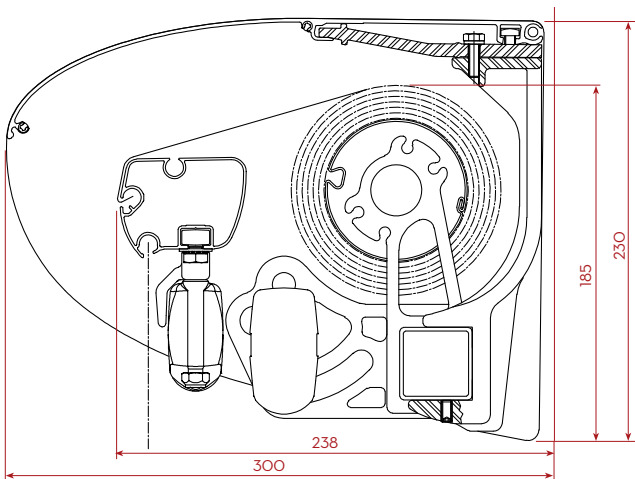


HORIZON MONOBLOC

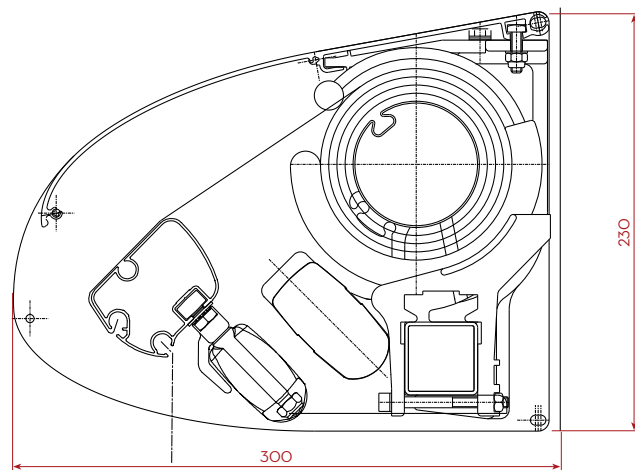


- | | | | | | |
|---|------------------------------------|----|--------------------------------------|----|-------------------------------|
| 1 | 78mm Aluminium roller Tube | 7 | Roller tube support cover (optional) | 13 | Gearbox (7:1 or 13:1) |
| 2 | 78mm Cast aluminium drive bearing | 8 | Adjustable pitch arm bracket | 14 | Crank Handle |
| 3 | Facefix Bracket | 9 | Arms | 15 | Bolt Rope |
| 4 | 40 x 40 x 4mm Aluminium Square Bar | 10 | Fall bar hand | 16 | Motor - automation (optional) |
| 5 | Square bar endcap | 11 | Fall Bar - Extruded aluminium | | |
| 6 | Roller tube support bracket | 12 | Fall bar endcap | | |

HORIZONTAL ORIENTATION

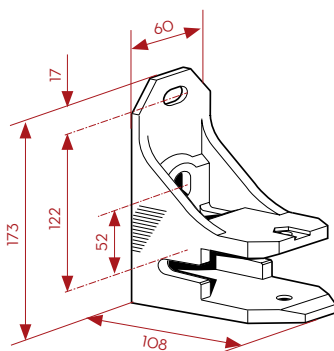


INCLINE ORIENTATION

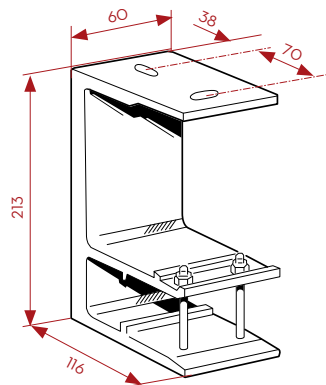


MINIMUM WIDTH VS PROJECTION								
Awning Width								
Projection	2 ARMS		3 ARMS		4 ARMS		6 ARMS	
	Gearbox	Motor	Gearbox	Motor	Gearbox	Motor	Gearbox	Motor
1500	1948	1888			3946	3886	5934	5874
2000	2440	2380			4930	4870	7410	7350
2500	2972	2912	4433	4373	5994	5934	9006	8946
3000	3464	3404	5171	5111	6978	6918	10482	10422
3500	4114	4054	6066	6006	8118	8058	12112	12052
4000	4694	4634			9278	9218	13852	13792

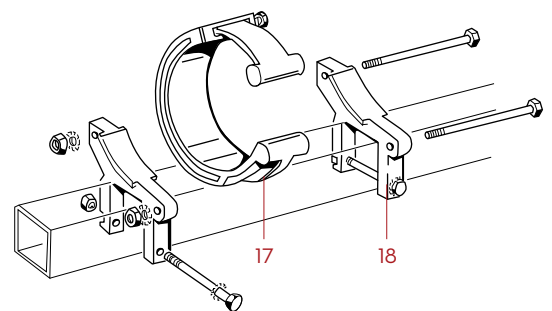
FACEFIX BRACKET



SOFFIT / TOP FIX BRACKET

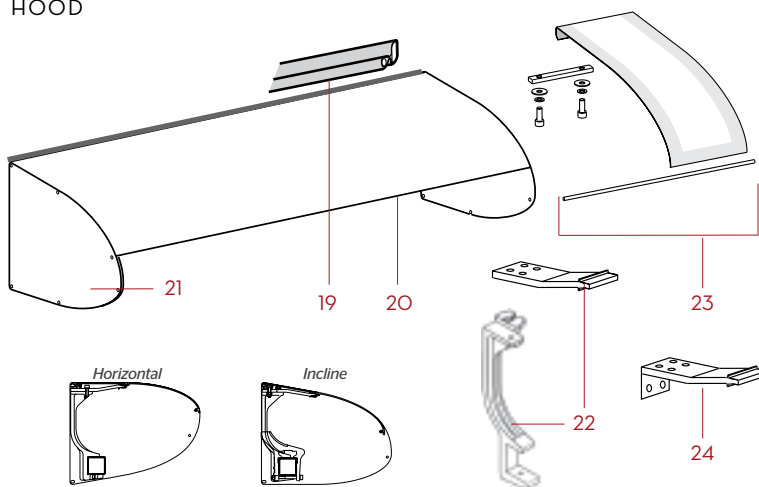


CENTRE ROLLER TUBE SUPPORT



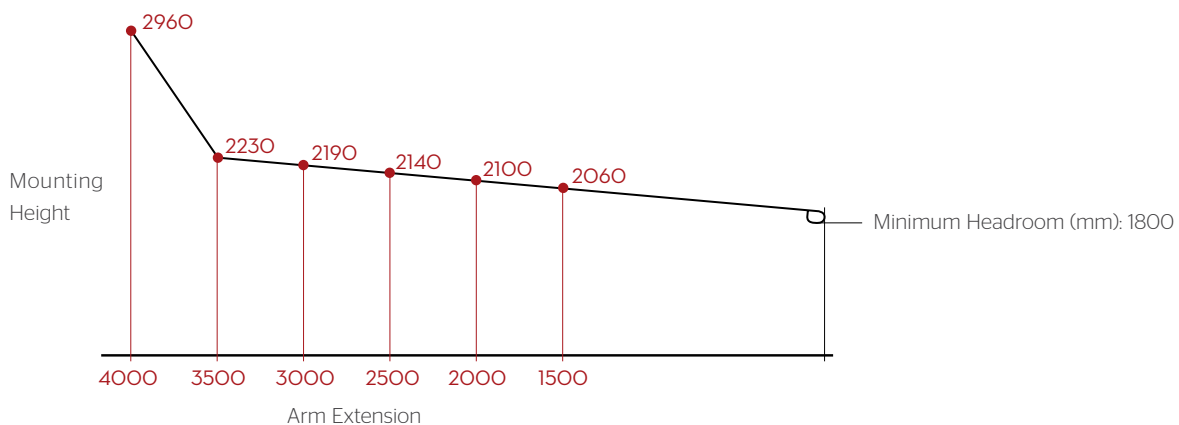
- 17 Stainless steel centre roller tube support
- 18 Cast aluminium centre roller tube support bracket

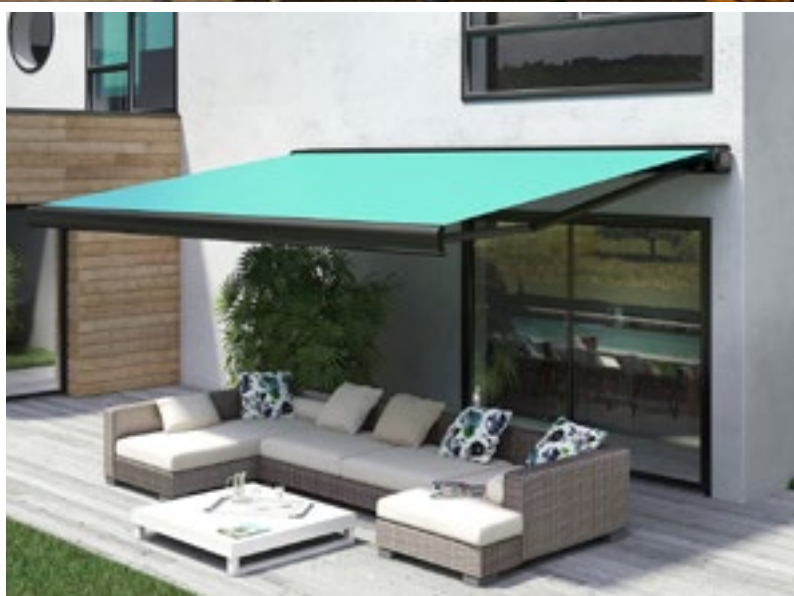
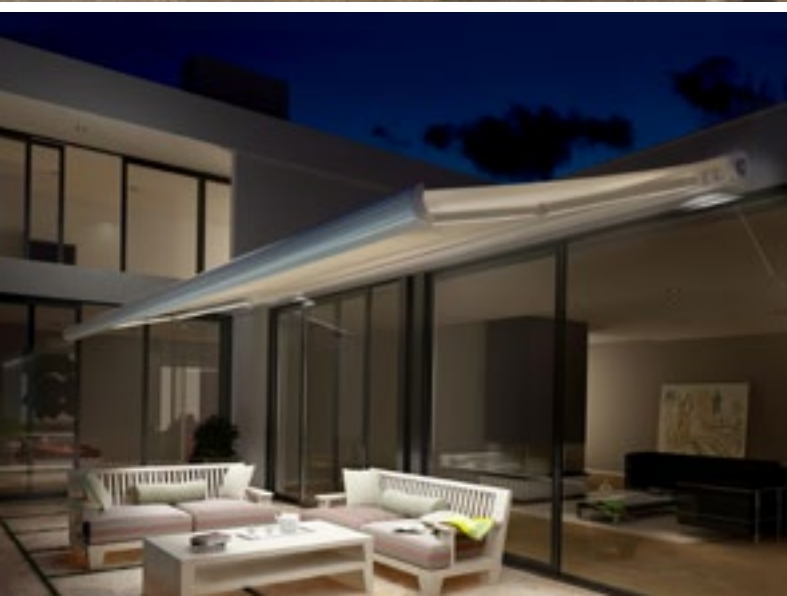
HOOD



- 19 Hood weather seal
- 20 Aluminum hood
- 21 Aluminium hood end plates
- 22 Hood bracket fixed to square tube
- 23 Hood joiner, threaded rod and washers
- 24 Hood wall bracket

INSTALLATION HEIGHT REQUIREMENTS





FETUNA CASSETTE

The Fetuna Cassette awning is architecturally inspired to allow a streamlined look when retracted. Designed in France and custom manufactured in New Zealand to withstand the harshest of environments. Cassette awnings are great if you require maximum protection and modern design with little maintenance. Made from the same quality components as the Horizon awning, the Fetuna is built to last!

UNBEATABLE QUALITY

Fetuna Cassette awnings are manufactured from high quality aluminium & Stainless steel components and are backed by a 5 year warranty for peace of mind.

COMPLETE PROTECTION

The fabric skin and mechanisms are completely protected when retracted, meaning a longer life and greater functionality.

FEATURES

WIDTH X EXTENSION

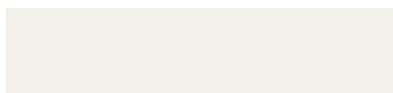
Minimum (mm): 2501 x 2000
Maximum (mm): 5800 x 4000

FABRIC

Acrylic Canvas - Docril
Shadeview Mesh

COLOURS

Warm White Pearl



OPERATION

Manual Crank Operation
Automated

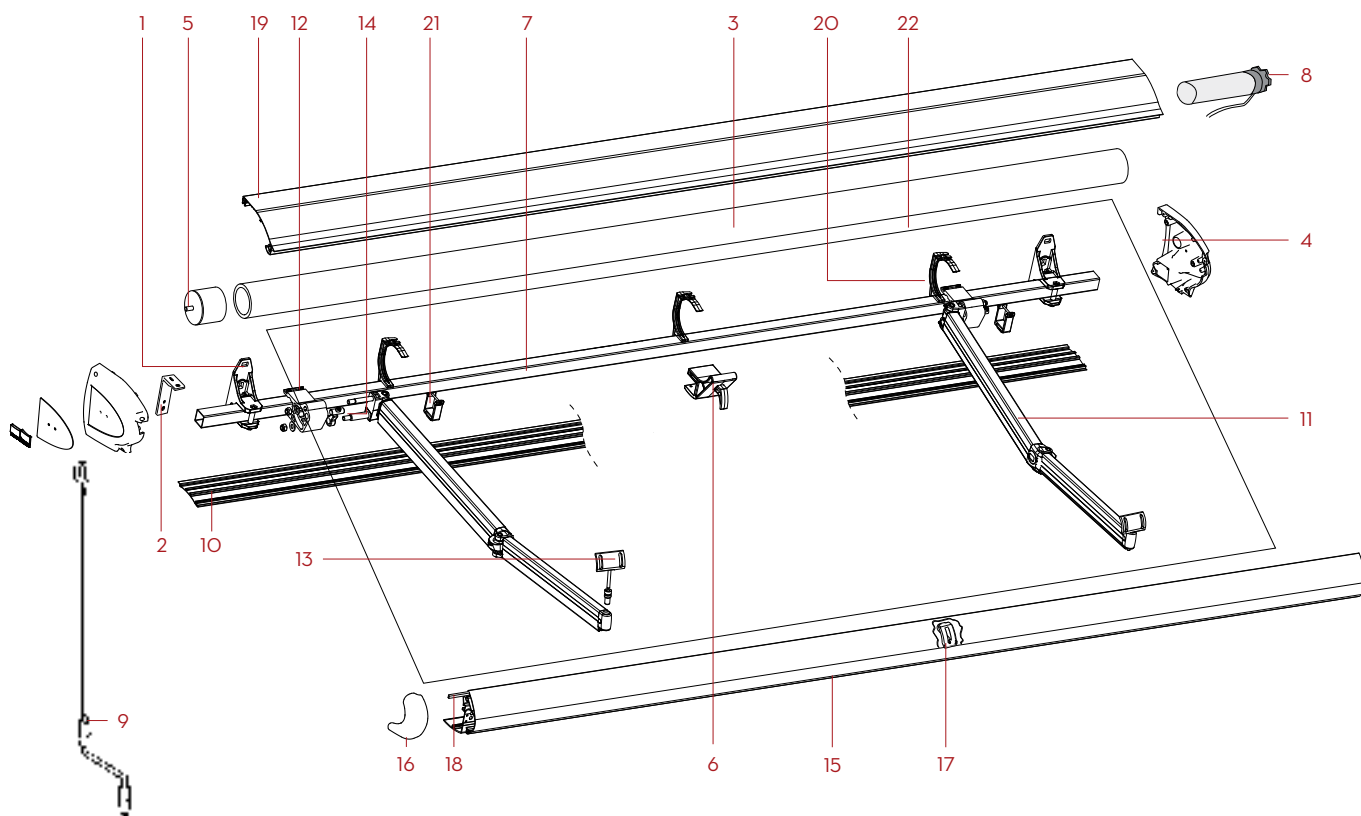
AUTOMATION OPTIONS

Sun & Wind Sensor
Motion Sensor

Anthracite

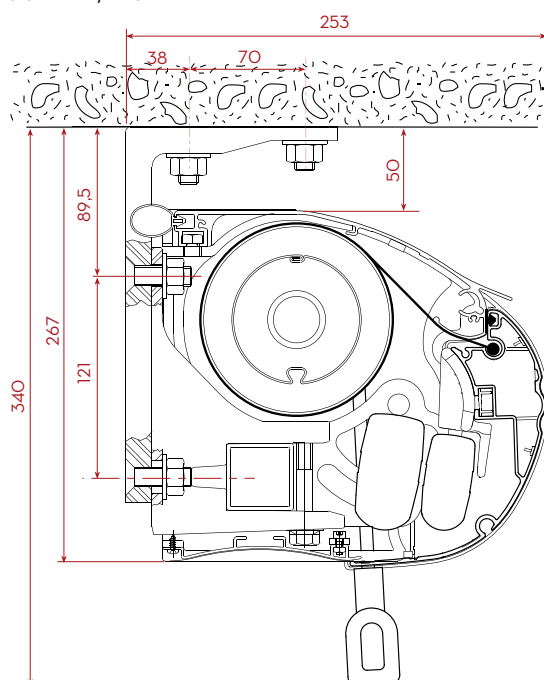


FETUNA CASSETTE

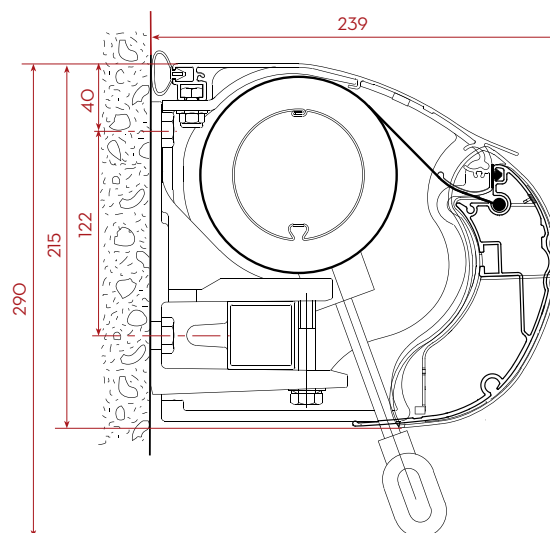


- | | | |
|--------------------------------------|----------------------------------|--------------------------------------|
| 1 Facefix bracket | 9 Crank handle | 17 Centre cam |
| 2 Soffit/Top Fix | 10 Bottom Cassette extrusion | 18 Weather seal |
| 3 78mm Aluminium roller tube | 11 Arms | 19 Top Cassette - extruded aluminium |
| 4 Cassette end plates - Aluminium | 12 Adjustable pitch arm bracket | 20 Cassette support brackets |
| 5 78mm Cast aluminium drive bearing | 13 Fall bar hand | 21 Bottom Cassette bracket |
| 6 Centre roller tube support | 14 Pitch adjustment bracket | 22 Fabric skin |
| 7 40 x 40 x 4mm Aluminium square bar | 15 Fall bar - Extruded aluminium | |
| 8 Motor - automation | 16 Fall bar endcap | |

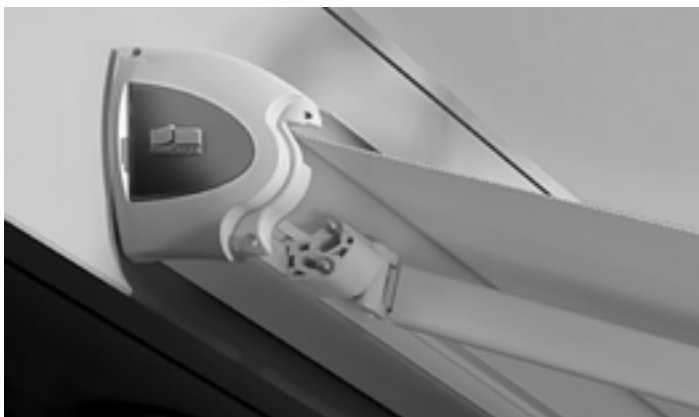
SOFFIT / TOP FIX



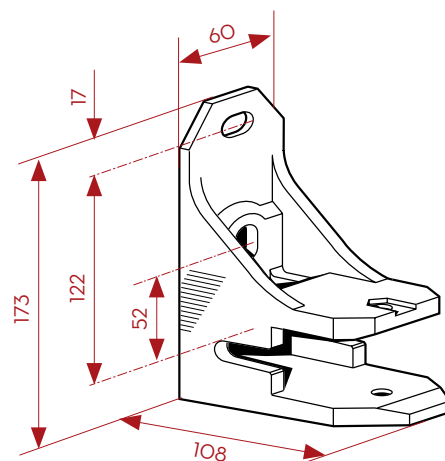
FACE FIX



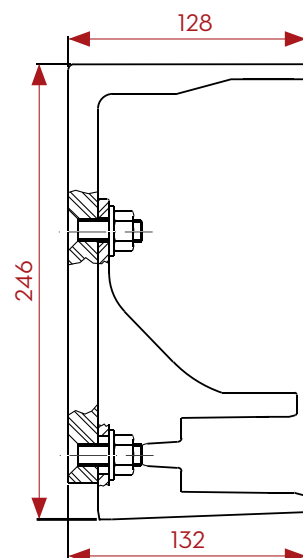
MINIMUM WIDTH VS PROJECTION		
Awning Width		
2 ARMS		
Projection	Gearbox	Motor
2000	2526	2493
2500	3056	3023
3000	3548	3515
3500	4188	4155
4000	4768	4735



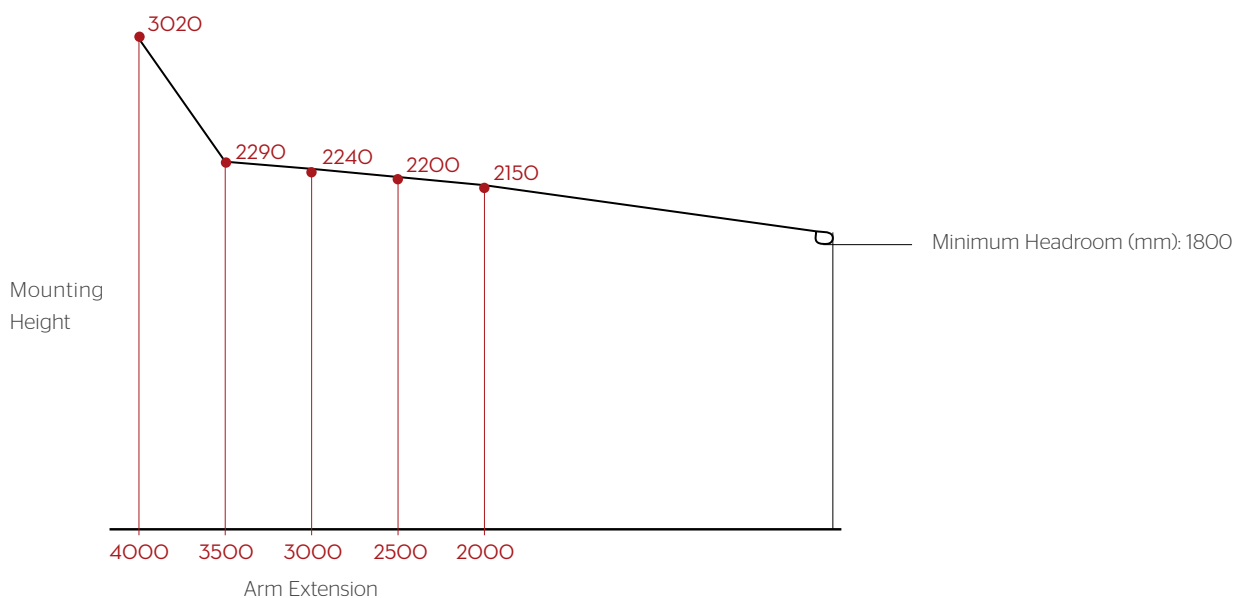
FACEFIX BRACKET



SOFFIT / TOP FIX



INSTALLATION HEIGHT REQUIREMENTS





VERTIGO WINDOW AWNING

The Vertigo drop arm awning is a great solution for window shading and interior privacy, having been designed with interior climate control and solar protection in mind. Sunscreen mesh allows natural filtered light and acrylic canvas provides a private finish.

INCREASED PRIVACY

Vertigo awnings can be lowered to give your windows privacy from neighbouring properties and main thoroughfares.

SOLAR PROTECTION

Vertigo awnings are an excellent way to protect your carpet and furniture from harmful UV rays. Using window awnings in the warmer seasons can significantly reduce cooling costs by blocking sunlight from entering through the window.

FEATURES

WIDTH X EXTENSION

2 Arms

Minimum (mm): 500 x 750
Maximum (mm): 5850 x 1500

3 Arms

Minimum (mm): 5850 x 750
Maximum (mm): 10640 x 1500

OPERATION

Manual Crank Operation
Automated

AUTOMATION OPTIONS

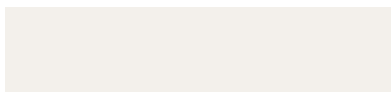
Sun & Wind Sensor
Motion Sensor

FABRIC

Acrylic Canvas - Docril
Shadeview Mesh

COLOURS

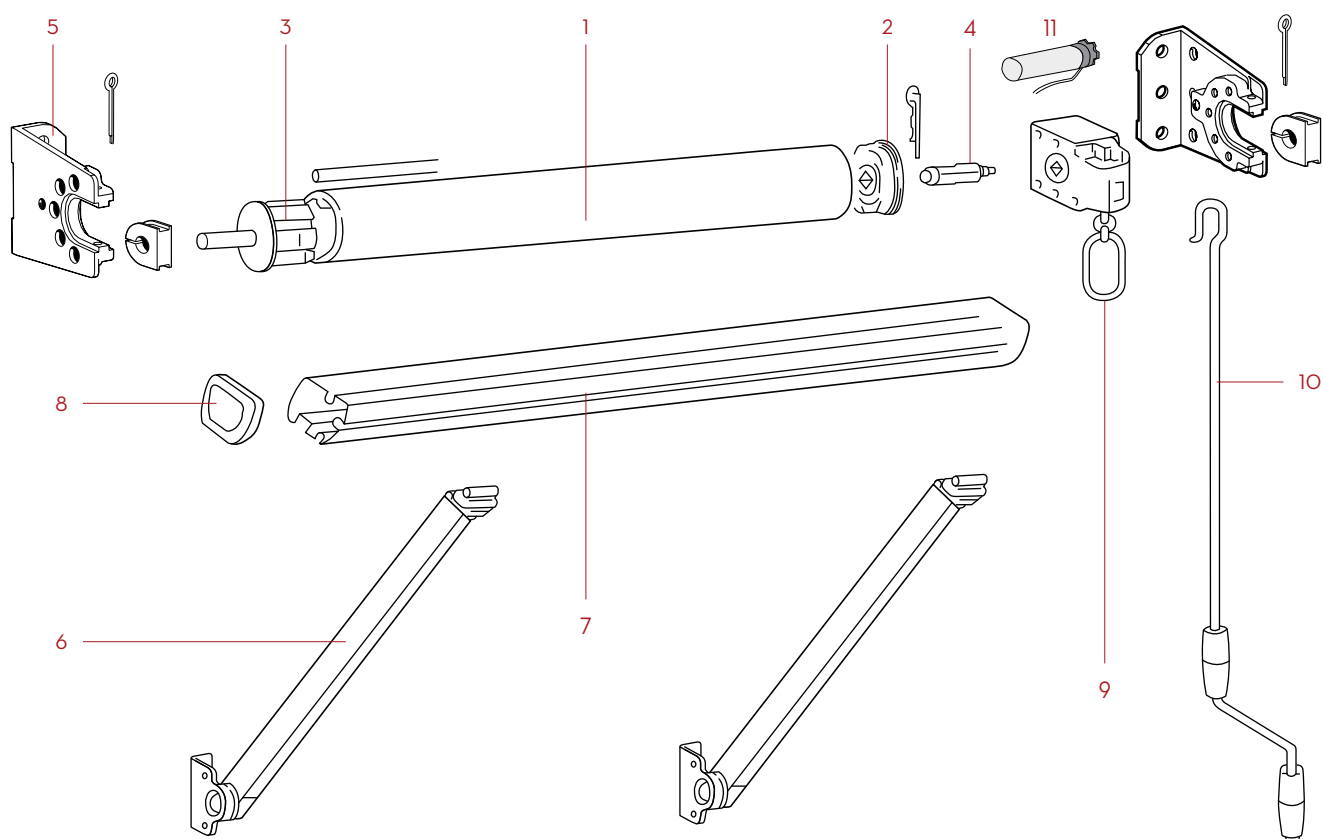
Warm White Pearl



Silver Pearl

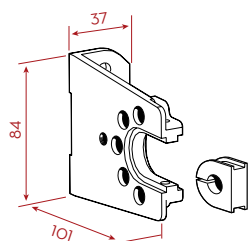


VERTIGO WINDOW AWNING

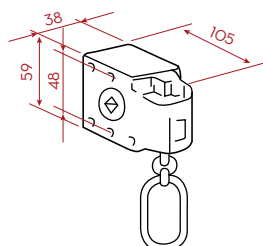


- | | | | | | |
|---|--------------------------------|---|------------------------------------|----|-----------------------|
| 1 | 78mm Aluminium roller tube | 5 | Mounting brackets - Cast aluminium | 9 | Gearbox (7:1 or 13:1) |
| 2 | Drive bearing - cast aluminium | 6 | Spring loaded arm | 10 | Crank handle |
| 3 | Idle end | 7 | Fall bar -Extruded aluminium | 11 | Motor - automation |
| 4 | Square shaft - Stainless steel | 8 | Fall bar endcap | | |

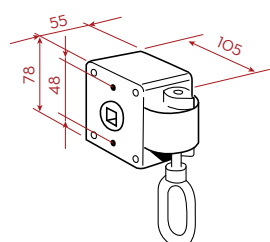
MOUNTING
BRACKET
FACE /
TOP FIX



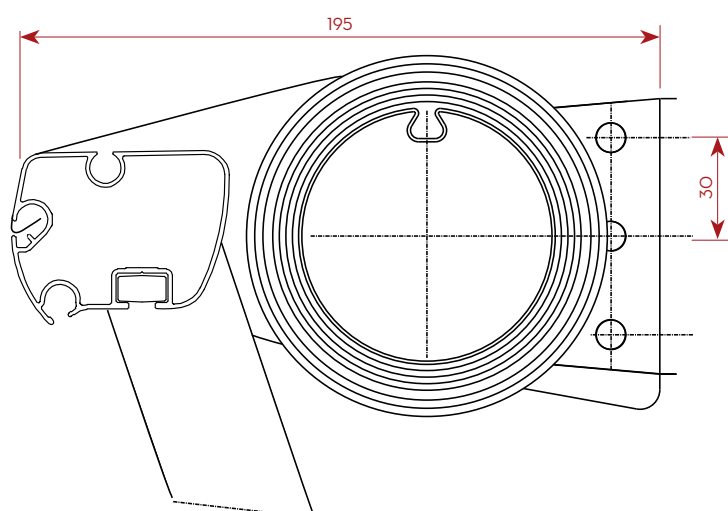
7:1 GEARBOX



13:1 GEARBOX



PROFILE VIEW



AWNING AUTOMATION

Operate your awning or blind with the simple push of a button. The tubular motor fits discreetly inside the roller tube to allow users to sit back, relax and enjoy ease of operation. The awning motors are safe, reliable and ideal for hard to reach windows or people who may find a gearbox and handle operation difficult.

TECHNOLOGY

Remote controls use the latest RF (radio frequency) technology which does not require a "line of sight" approach. If you have more than one awning or blind they can be operated individually or in unison up to 16 channels. Integration to a building management system (BMS) is also achievable.

PROTECTION

Wind and Sun or motion sensors can be added to protect your investment, these are designed to retract your awning or blind when high winds arise to keep them free from damage.

WSER50 - 10/27 - TUBULAR MOTOR

Application: External blinds

- Lifting Capacity: 17Kg
- Power specifications - 240V/50HZ
- 10 NM / 27 RPM
- Nominal current (A) 0.84
- IP44 Rating
- Wireless remote



Pioneer Series
4 Channel
Remote



Navigator Series
4 Channel
Remote

WSER50 - 30/17 - TUBULAR MOTOR

Application: External blinds, non-cassette awnings

- Lifting Capacity: 51Kg
- Power specifications - 240V/50HZ
- 30 NM / 17 RPM
- Nominal current (A) 0.95
- IP44 Rating
- Wireless remote



Wall Remote



Motion Sensor

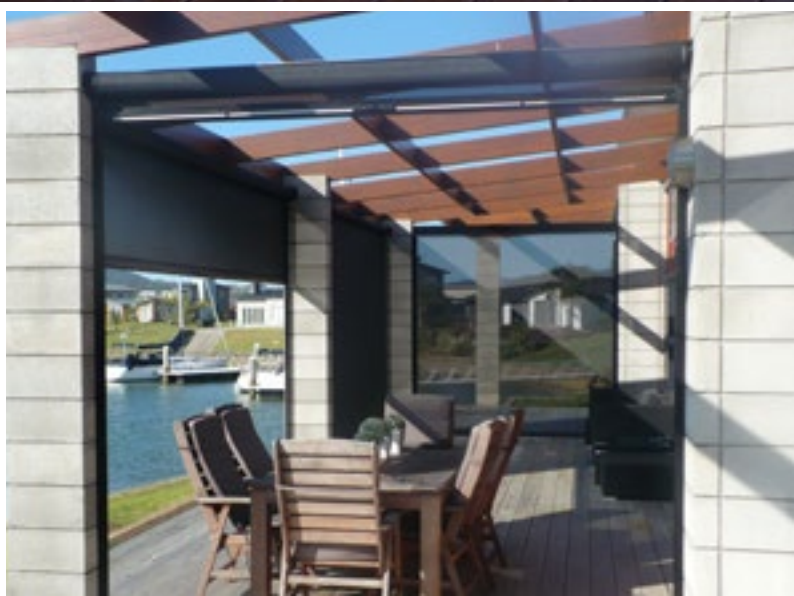
WSER50 - 50/13 - TUBULAR MOTOR

Application: Large external blinds, non-cassette awnings

- Lifting Capacity: 80kg
- Power specifications - 240V/50HZ
- 50 NM / 13 RPM
- Nominal Current (A) 1.06
- IP44 Rating
- Wireless remote



Wind & Sun
Sensor



ZIPTRAK®

Ziptrak® blinds connect your indoor and outdoor environments into one harmonious space. Ziptrak® outdoor blinds instantly create a brand new space in your home, ready to entertain family and friends at a moment's notice. Protected at any time of the year, with a sense of seclusion and sanctuary, you'll spend more time enjoying life outdoors.

EASY AND FAST OPERATION

The track guided system is simple and safe to operate – no zips, ropes or buckles. Using our patented spring balanced track system, the blind easily glides up and down, stopping in any position.

- Year-round outdoor entertaining
- Control your environment
- Privacy for your backyard or deck area
- Spend less time cleaning

CONNECT WITH THE OUTDOORS

Ziptrak® blinds allow you to control airflow, light and temperature whilst remaining connected with nature. Relax and indulge in your own private retreat.

- The trusted solution for outdoor protection
- Robust design and materials
- Versatile installation options

ADD ANOTHER ROOM TO YOUR HOME

Ziptrak® outdoor blinds provide a quick, simple and affordable alternative to renovating. Expand your space without expensive renovations. Our patented system offers many features that make the blind easier to use, robust and visually unobtrusive compared with competitor products.

No ropes, no zips, no straps, no buckles.

FEATURES

WIDTH X HEIGHT

Minimum (mm): 650 x 500
Maximum (mm): 4500 x 3500

OPERATION

Manual spring assisted - Standard
Automated (Shadeview Mesh only)

PROTECTION

Optional Flashing
Optional Full Pelmet

FABRIC

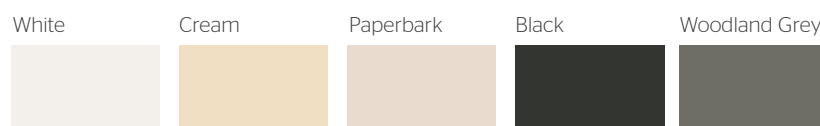
Acrylic Canvas - Docril
Shadeview Mesh
Clear 0.75mm PVC

PELMET SIZES

Small Pelmet:
Suitable for drops up to 2400mm
Large Pelmet:
Suitable for drops up to 3300mm

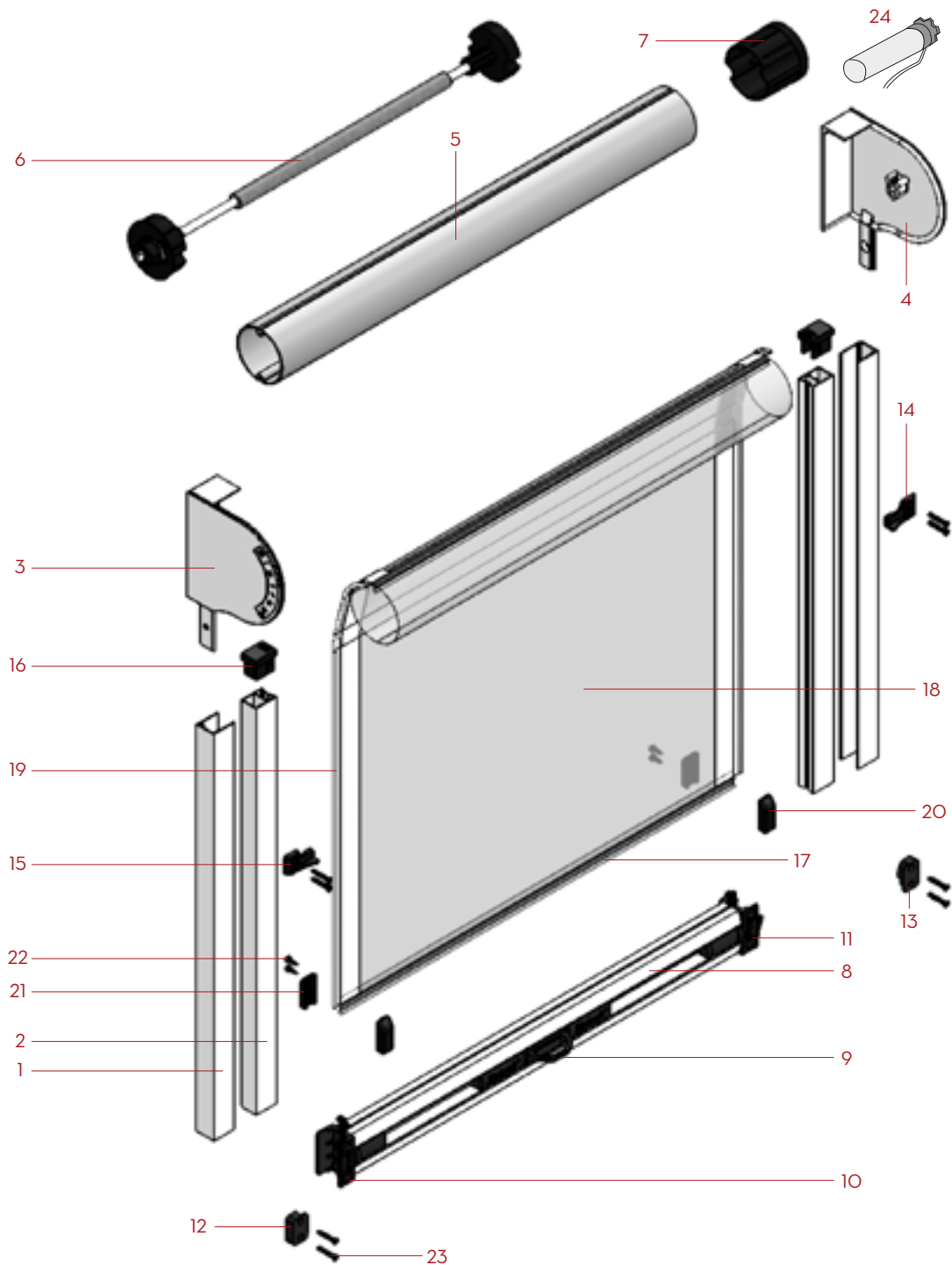
COLOURS

Standard Powder Coat Colours
Cordura Side Spline Colours



Custom Powder Coat Colours on request

ZIPTRAK®



- | | | | | | |
|----|---------------------------------|----|---|----|--|
| 1 | 30x25mm Bracket Channel | 11 | Right Hand Bottom Bar Guide with Locking Tongue | 18 | 0.75mm Clear PVC Skin |
| 2 | Ziptrak® Track | 12 | Left Hand Lock Catch | 19 | HT Polyester Side Spline Tape |
| 3 | Left Hand Cast End Bracket | 13 | Right Hand Lock Catch | 20 | Fabric Clamp (No Holes Part) |
| 4 | Right Hand Cast End Bracket | 14 | Right Hand Top Stop | 21 | Fabric Clamp (Holes Part) |
| 5 | 63mm Keyway Tube | 15 | Left Hand Top Stop | 22 | #6 x 1/2" Stainless Steel, Pan Head Screw |
| 6 | 63mm Ziptrak® Smoothline Spring | 16 | Guide Funnel | 23 | #8 x 25mm Counter Sunk, Self Drilling Screw, Class 3 Galv. |
| 7 | 63mm Idler Cap | 17 | Top & Bottom Extruded PVC Spline Tape | 24 | Motor - automation |
| 8 | Ziptrak® Bottom Rail | | | | |
| 9 | Centre Lock Release Handle | | | | |
| 10 | Left Hand Bottom Bar Guide | | | | |

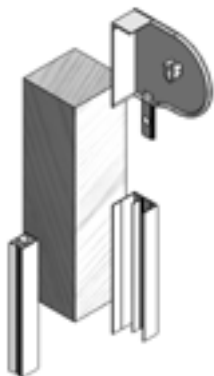


REMOVABLE POST

If an opening is too wide for one Ziptrak blind, add a removable post so the opening can be split into two blinds. When the blinds are in the retracted position the post can simply be removed and stored to offer an un-interrupted view. Slot the post back in position and your Ziptrak blinds are operational again. EASY!

FACE FIX CHANNEL

Offers versatility to a Ziptrak installation and is used when mounting the Ziptrak side channel on the face of a surface rather than inserting the blind between posts.



APPLICATION EXAMPLES



CENTRE LOCK RELEASE



CAST BRACKET



CAST BRACKET WITH FLASHING



FULLY ENCLOSED PELMET





CAFÉ BLIND

The café style exterior blind is simple and easy to use and can be adapted to most applications. Operated by crank handle or automated, the system uses simple stainless steel clips to lock in place. Wind down, lock off and back tension to get a taut streamlined look. The café blind uses sturdy stainless steel mounting brackets, aluminium tube and bottom rail. Shadeview mesh can be sign written for business advertising whilst providing great views and shade, clear PVC can be selected for complete weather protection and visibility.

- Quick
- Practical
- Easy
- Durable
- Simple Design
- Versatile

FEATURES

WIDTH X HEIGHT

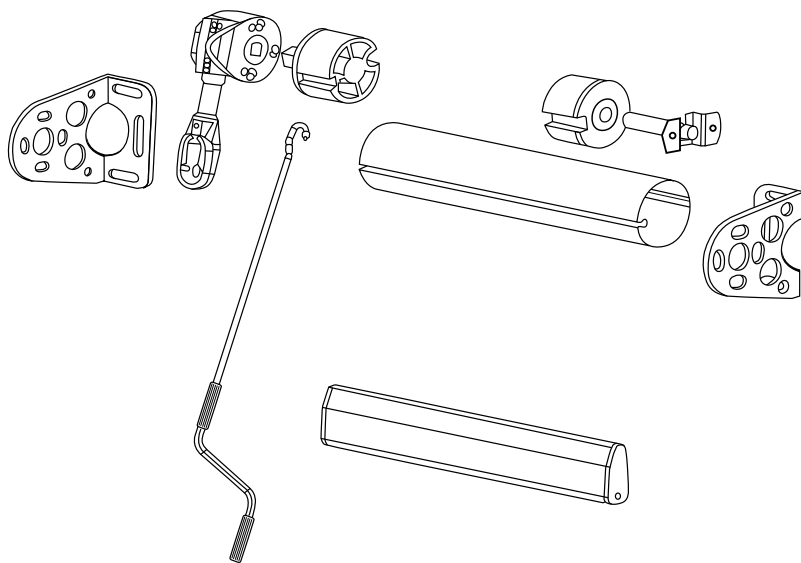
Minimum (mm): 500 x 500
Maximum (mm): 4500 x 4000

OPERATION

Manual Crank Operation
Automated

FABRIC

Acrylic Canvas - Docril
Shadeview Mesh
Clear PVC





Docril solution dyed fabrics for awnings, marine, parasol and outdoor furniture are well known in Europe, Asia, Australia & New Zealand. At Docril Fabrics, we believe in providing our customers with superb quality products, large colors & patterns selection and industry best 10-year product warranty. Docril® uses Teflon® in the finishing process. Teflon® protects the fabric, creating a barrier which reinforces the water repellence and delays the dirt adherence.

If it's not Docril®... it's just fabric



MAINTENANCE

Maintenance to achieve a longer life expectancy and a better look of the fabric. We suggest cleaning your Docril® fabric with a soft bristle brush and rinsing with water. For localised stains clean with a neutral detergent mixed with lukewarm water (maximum 104° F) and then rinse. The fabric must be left to dry completely before it is rolled up.



Shadeview versatile fabric is most popularly used for external window shading. This stylish fabric protects your home or alfresco area from wind, rain and the harmful UV rays while optimising your view. ShadeView has a high shade factor blocking up to 97% of the sun's rays, reducing the temperature inside your home or commercial property and your energy costs.

Shadeview is available in wide widths allowing for seam free awnings & blinds.

Ideal Applications: Awnings, Exterior blinds and Shade sails

- Provides Shade & Privacy
- Breathable
- Effortless cleaning
- 10 year warranty
- Fire Retardant
- Mildew Resistant
- Available in wide widths



Achilles Rollclear PVC glazing is the perfect solution to ensure outdoor enjoyment no matter what the weather brings. Achilles is the leading brand of UV stabilised clear PVC and is ideal for commercial and residential applications. The result is a functional and aesthetically pleasing solution.

Achilles Rollclear is manufactured to provide a high quality, clear finish that is perfect for commercial and marine applications where visual clarity is essential.

- UV stabilised
- Non-stick formulation (SLS)
- High clarity
- Made in Japan
- Proven field performance
- Blocks 93% of UV Solar Radiation
- FR compliant product available



SHADEELEMENTS

www.shadeelements.co.nz